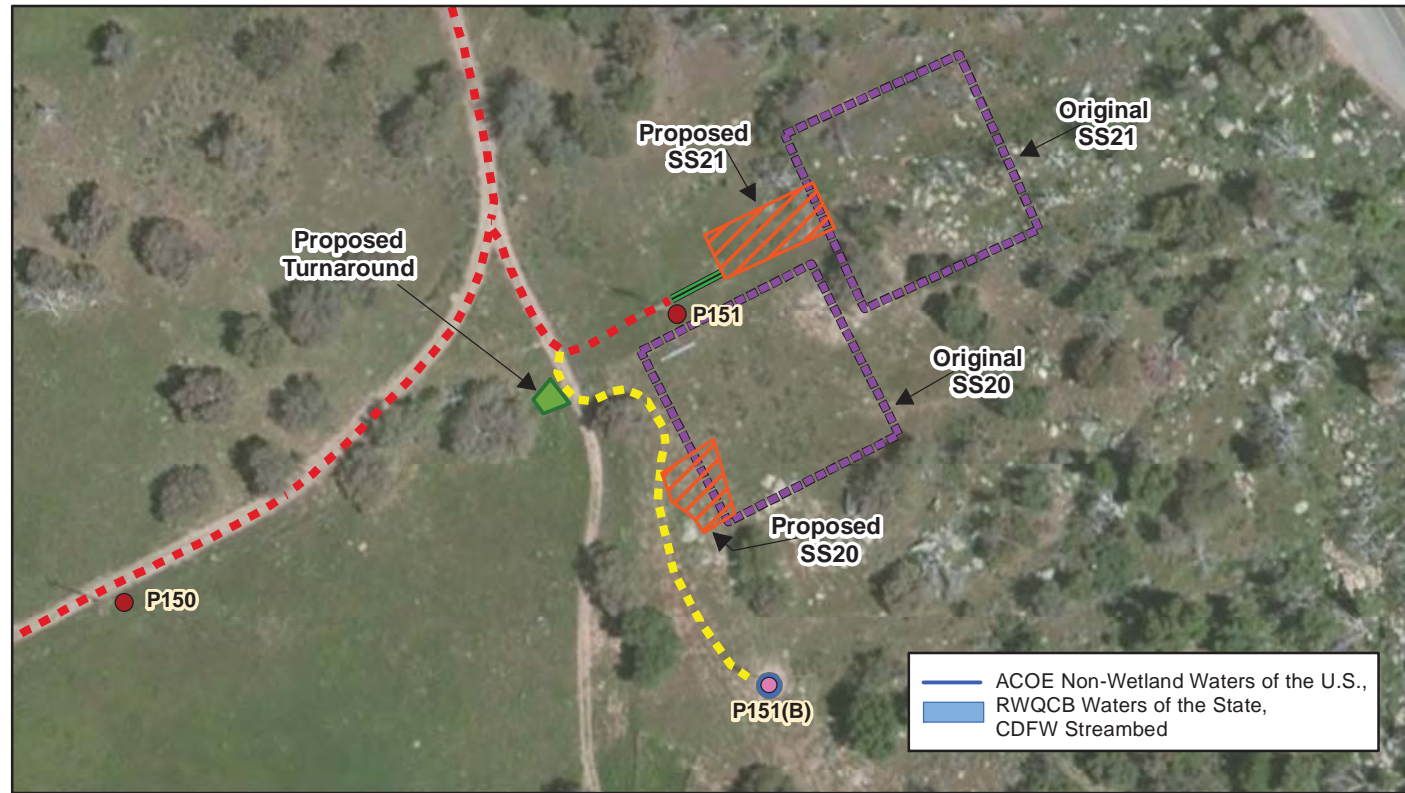
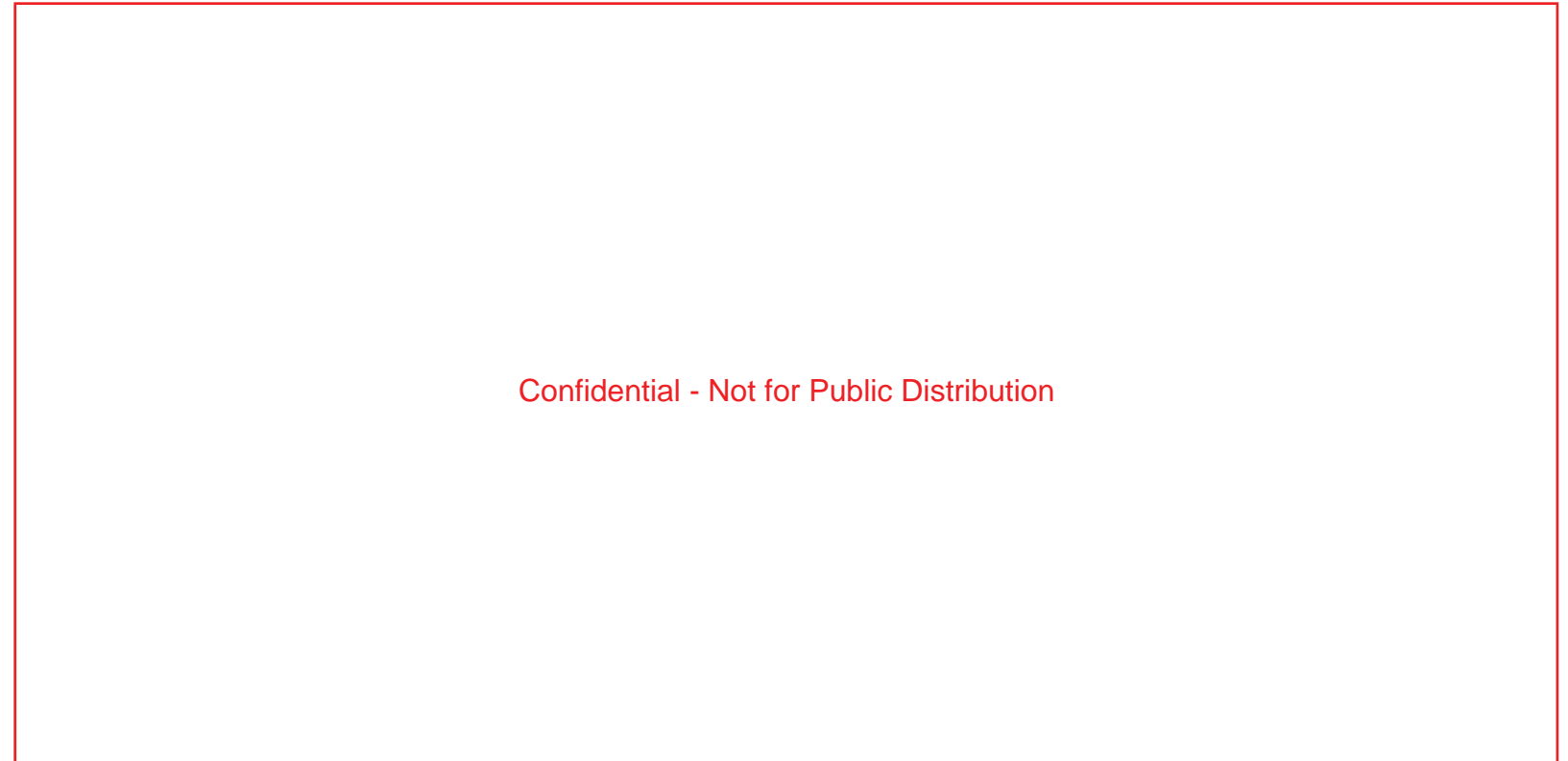


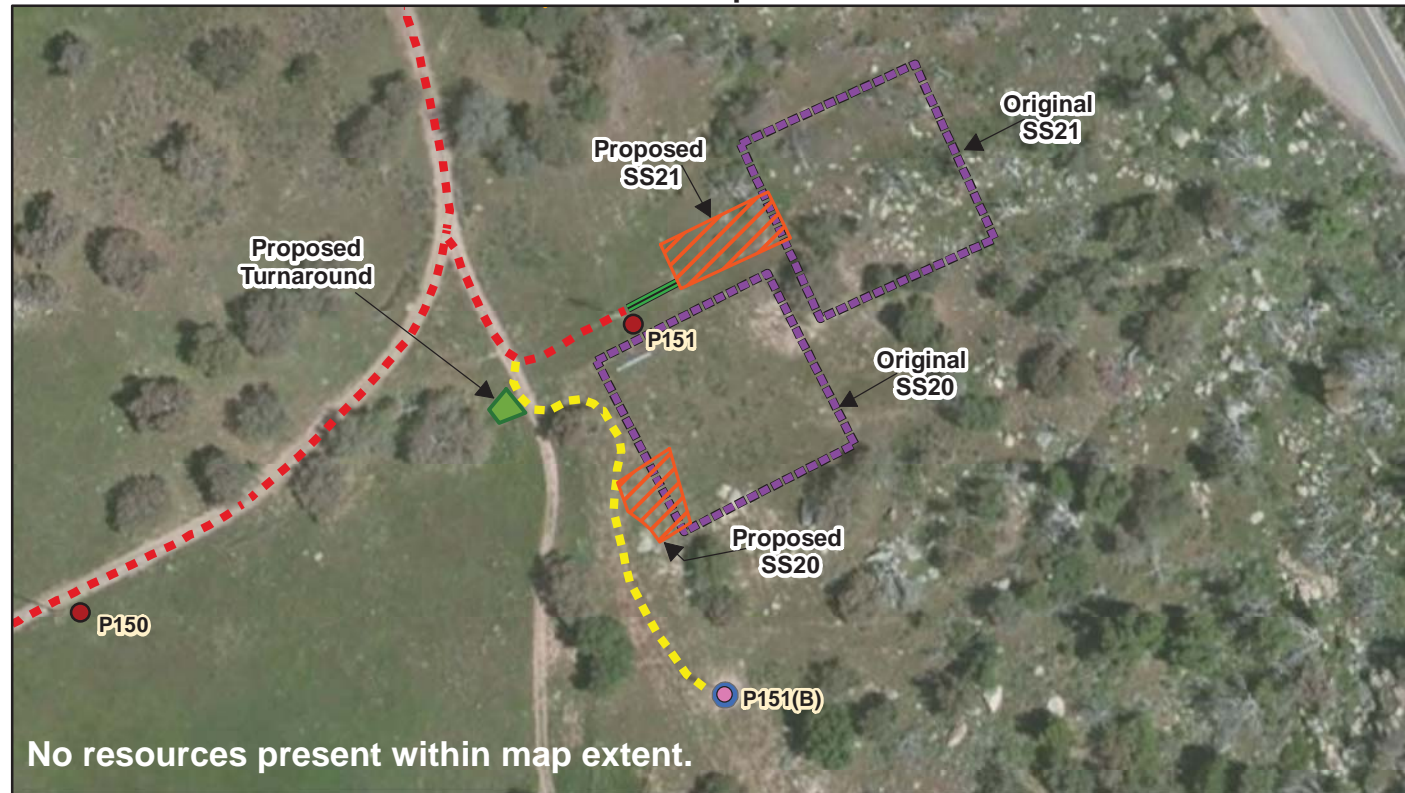
Aquatic Resources



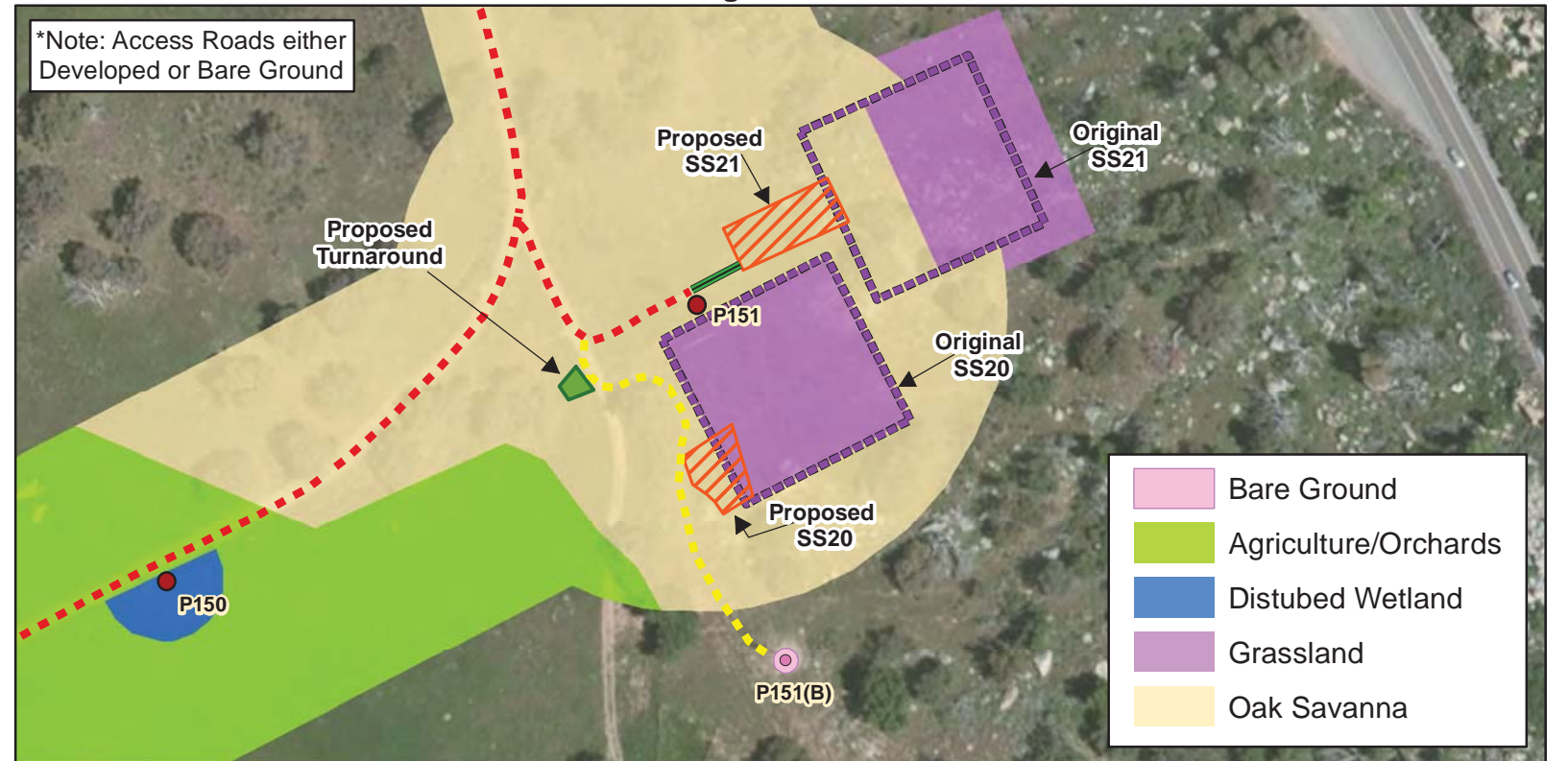
Cultural Resources



Sensitive Species



General Vegetation

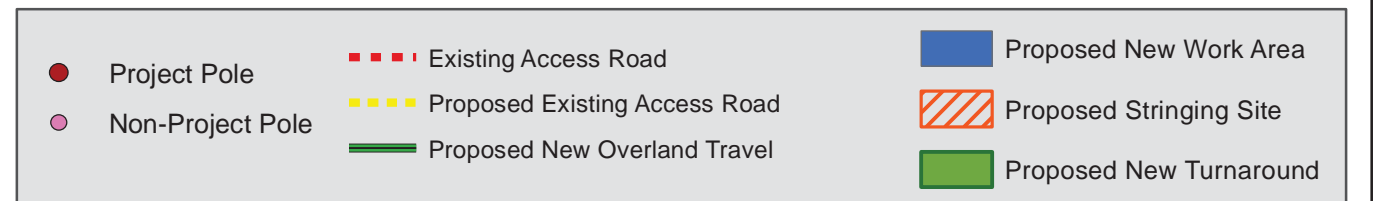
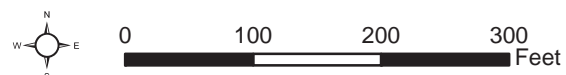


G:\SDG&E_TL_637_PFA\MXD\SDGE_TL_637_SS20SS21.mxd

Minor Project Refinement Request No. 10 (Stringing Site 20, Stringing Site 21, Turnaround Area and Overland Travel)

Attachment A: Resources Maps

Tie-Line 637 Wood-To-Steel Project



Service Layer Credits: Source: Esri, DigitalGlobe, GeoEye, i-cubed, USDA, USGS, AEX, Getmapping, Aerogrid, IGN, IGP, swisstopo, and the GIS User Community